

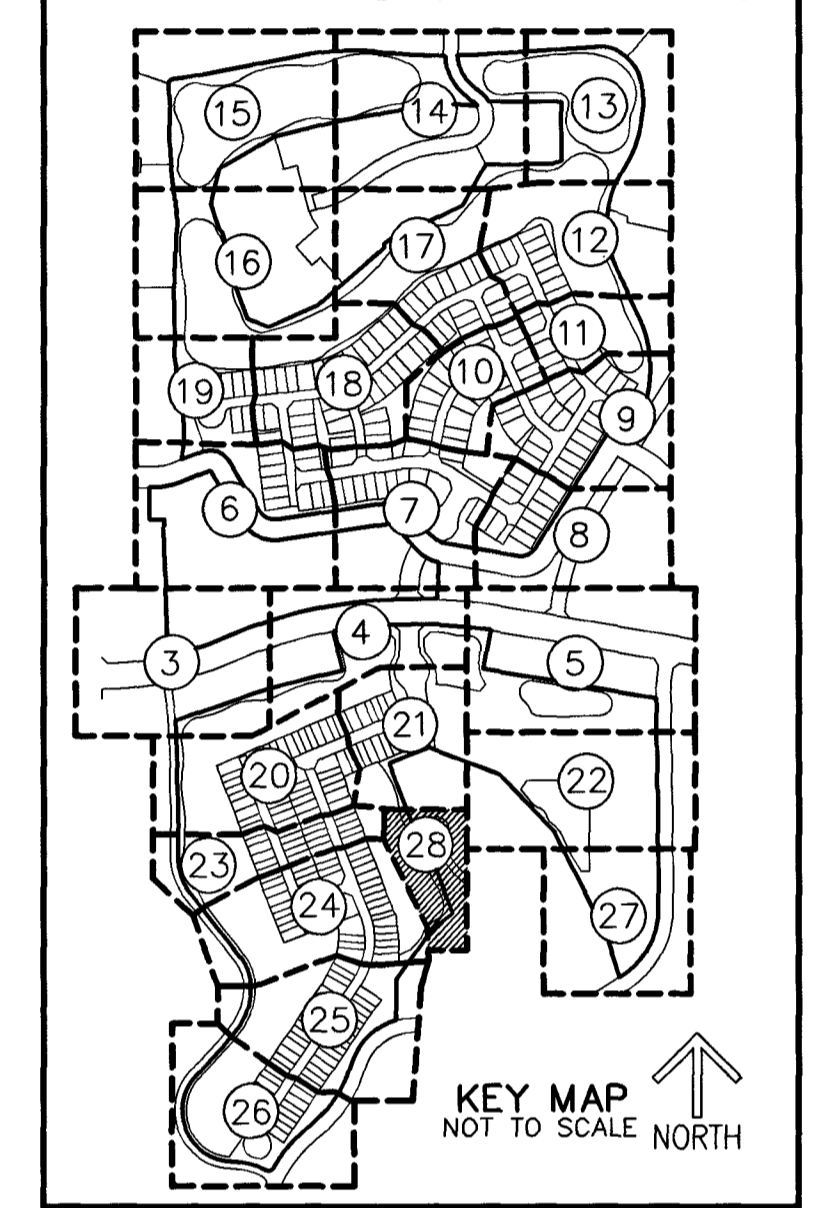
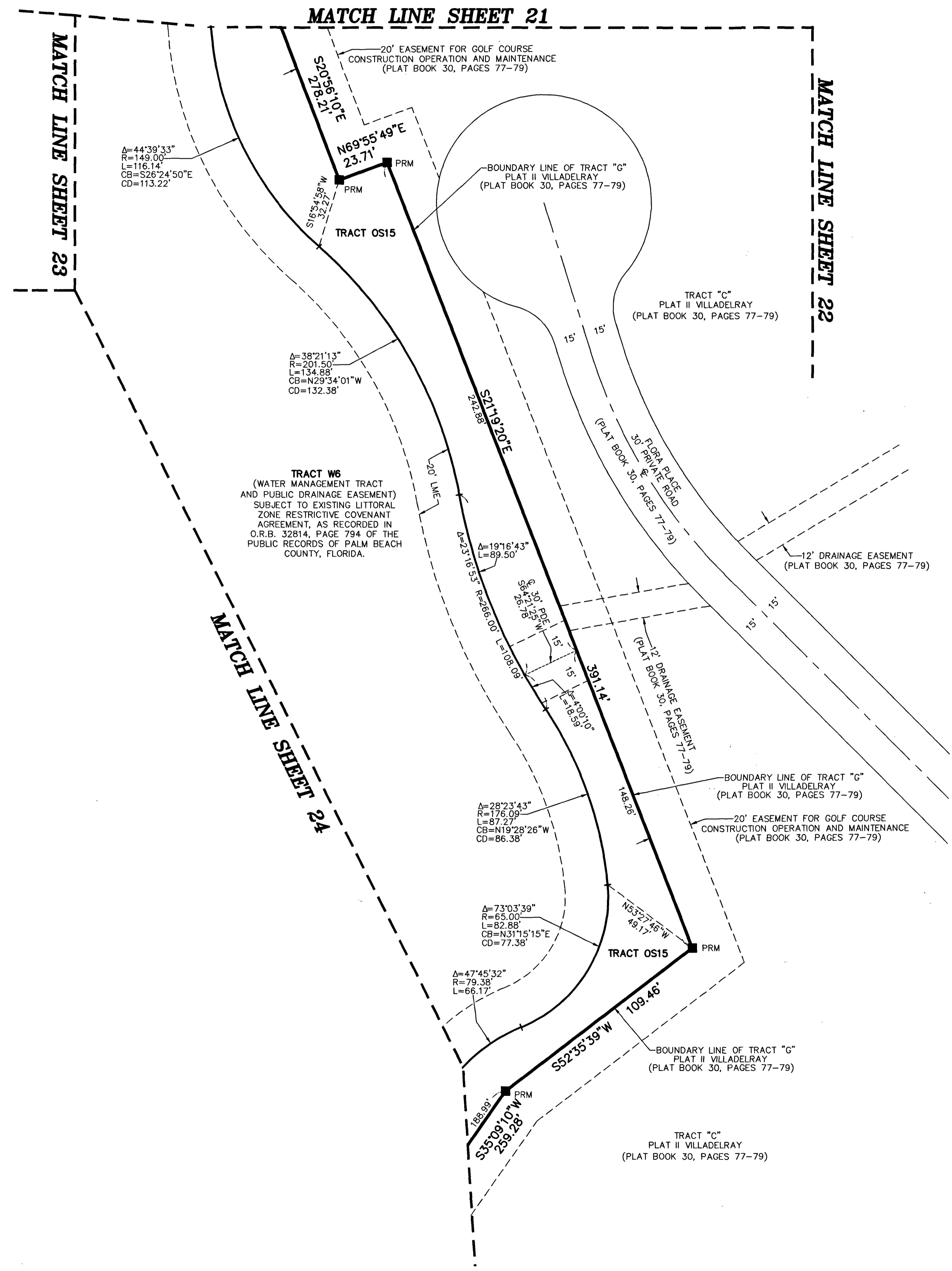
62

THIS INSTRUMENT PREPARED BY
DAVID P. LINDLEY
OF
CAULFIELD and WHEELER, INC.
SURVEYORS - ENGINEERS - PLANNERS
7900 GLADES ROAD, SUITE 100
BOCA RATON, FLORIDA 33434 - (561)392-1991
CERTIFICATE OF AUTHORIZATION NO. LB3591

DELRAY TRAILS AT VILLA DELRAY PUD

BEING A REPLAT OF ALL OF TRACTS "F", "G" AND "G-1", PLAT II VILLADELRAY,
AS RECORDED IN PLAT BOOK 30, PAGES 77 THROUGH 79 OF THE PUBLIC RECORDS OF PALM BEACH COUNTY, FLORIDA,
TOGETHER WITH PORTIONS OF SECTION 11, TOWNSHIP 46 SOUTH, RANGE 42 EAST,
ALL LYING IN SECTION 11, TOWNSHIP 46 SOUTH, RANGE 42 EAST, PALM BEACH COUNTY, FLORIDA

SHEET 28 OF 28



NOTES
COORDINATES, BEARINGS AND DISTANCES
COORDINATES SHOWN ARE GRID
DATUM = NAD 83 (90 ADJUSTMENT)
ZONE = FLORIDA EAST
LINEAR UNIT = US SURVEY FEET
COORDINATE SYSTEM 1983 STATE PLANE
TRANSVERSE MERCATOR PROJECTION
ALL DISTANCES ARE GROUND UNLESS OTHERWISE NOTED
SCALE FACTOR = 1.000032158
GROUND DISTANCE X SCALE FACTOR = GRID DISTANCE
BEARINGS AS SHOWN HEREON ARE GRID DATUM,
NAD 83 (1990 ADJUSTMENT), FLORIDA EAST ZONE.

